

Your
project communication and
management system

PKS
NETPlan[®]

Sweco is the most approachable
and committed partner with recog-
nised expertise.

Transforming society together.

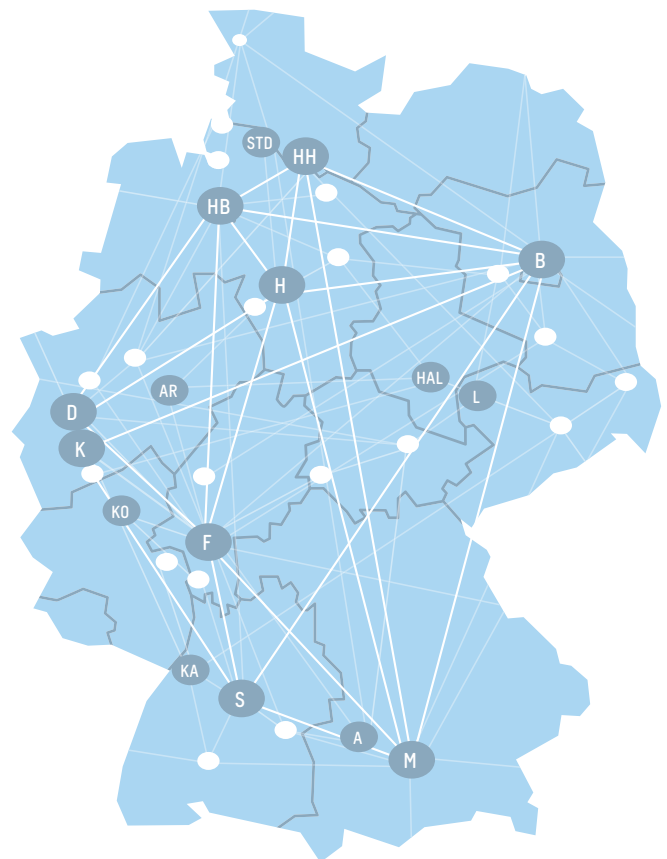
Sweco plans and designs the sustainable communities and cities of the future. We offer our clients the combination of global expertise and local understanding of their business and context. Our ambition is to be our clients' most relevant partner. To achieve that, we aim to solve any challenge, no matter scale or location.

Acting today for the world of tomorrow

The future may seem remote to others, but it is very much present at Sweco. Our architects are currently working on the indoor environment for a new hospital which should be admitting patients within five years. Our traffic engineers are currently analyzing a new underground metro line that will open to passengers within ten years. And our environmental planners are supervising the approval of a new power line that will be essential for Germany's energy transition.

We make it easy for you

You have to make 1,000 decisions? Just one is enough! Wherever and however people's living conditions are to be improved, complex tasks arise first. We master these by networking competencies and constantly expanding them. For combined expertise in a wide range of specialist areas and above all: for sustainable solutions from a single source. So in the end, you only have to make one decision: for Sweco.



Sweco offices including all subsidiaries

PKS NETPlan® – product profile

PKS NETPlan® is the web-based solution for project communication - a product by engineers for engineers!

For over 25 years, our web-based application has been providing cross-company, project-specific information management in construction projects and engineering projects. PKS NETPlan® is the central data source to which all project participants have access. In this Common Data Environment (CDE) - also called project space or project platform - the project data can be collected, managed and distributed centrally. This solution reliably supports the user in the efficient control and documentation of project activities. With our expertise in the fields of structural engineering, infrastructure, civil engineering and hydraulic engineering, we support all types of construction projects.

With PKS NETPlan® we provide you with a holistic solution that reliably supports you in a very wide range of tasks throughout your entire project life cycle. Whether you need a small or a large solution, whether your project is a high-rise building, a railway line, a tunnel or a power station - with PKS NETPlan® we configure a tailor-made software solution for you entirely according to your needs.

You can use PKS NETPlan® regardless of location, because our solution promises equivalent use on all end devices, as the display is adapted and optimised at any time.

www.pks-netplan.de

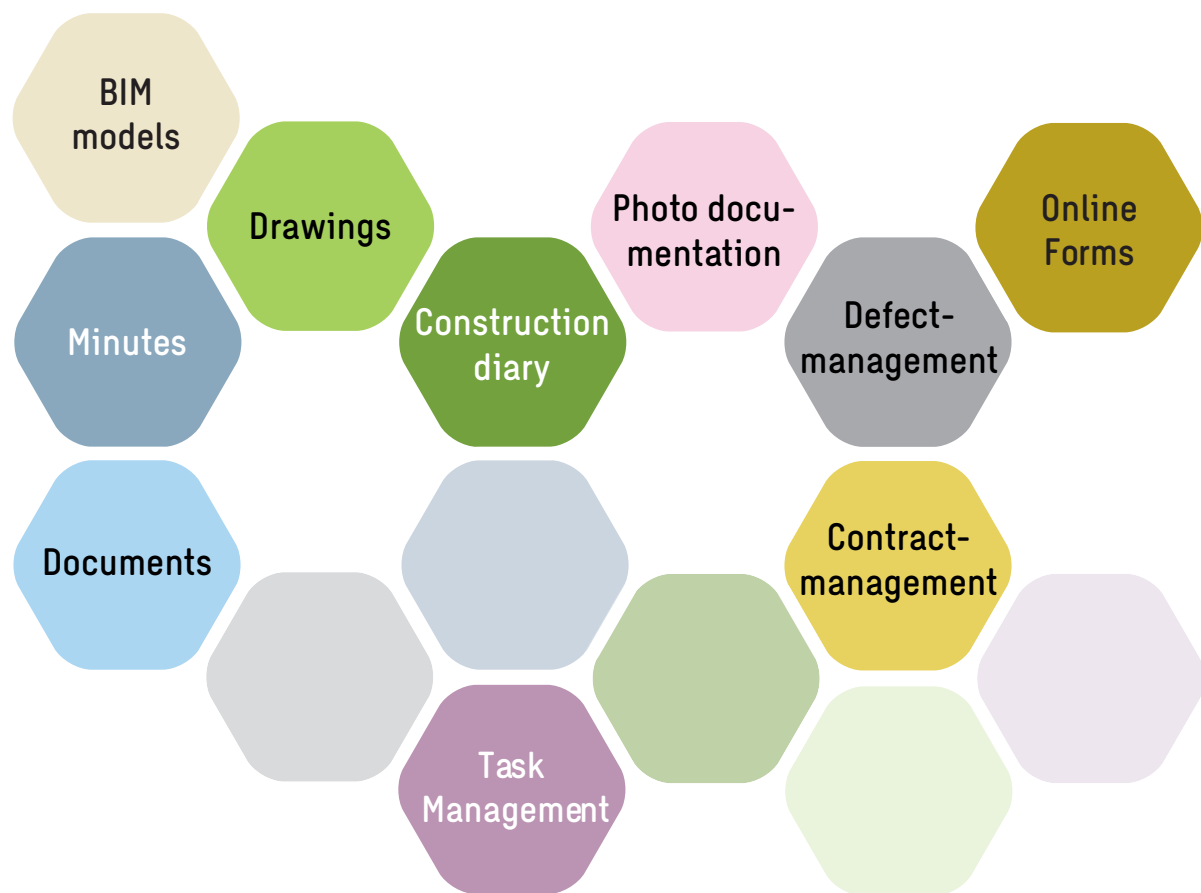


Don't miss our image fillm!



Our range of solutions

PKS NETPlan® offers a solution-oriented range of products for the entire lifecycle of a project:



We focus on the interaction of individual components in order to find the optimal solution for your project with complete documentation and maximum transparency.

Construction documents

Use the PKS NETPlan® Construction Diary to create daily construction reports and refer back to photos in the Photo Documentation module. Depict complete defect processes in the system or use the location of photos or defects on maps and plans to get a better overview. The combination of the Construction

Diary, Photo Documentation, Defect Management and Minutes modules provides a unique range of functions that you can use to map your digital construction site.

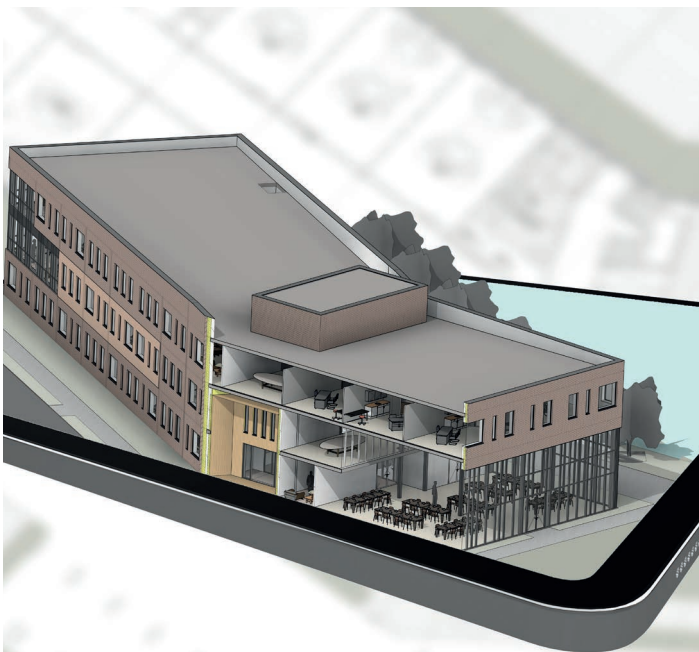
Only PKS NETPlan® provides you with such an easy and comprehensive solution!

Plans and documents

Exchange files with your project partners at any time via PKS NETPlan®. Use the comprehensive search functions, the full-text search or OCR text recognition to find documents quickly.

Allocate tasks and track their processing status or send and receive emails directly in the system. You can save workflows in the system and create automated processes for more efficient project management. Let the system send drawings to other participants automatically and find out who releases something and when.

Let the system do the work for you so you can save time and money!



© Rutmer / Adobe Stock

BIM model management:

Why are more and more clients deciding to realise their projects with BIM? Advantages such as planning reliability, seamless information exchange, increased efficiency and optimisation are often a decision criterion. The prerequisite for this is a professional tool, which you receive with PKS NETPlan® as a CDE (Common Data Environment). Based on openBIM and our 3D viewer, all relevant information is available to the project participants at any time.

The integrated issue management offers you the possibility to create, assign and exchange (export/import) BCF-issues with element assignment. The BIM model management of PKS NETPlan® also forms an optimal basis for planning meetings.

Stay one step ahead of possible planning errors!

Your benefits

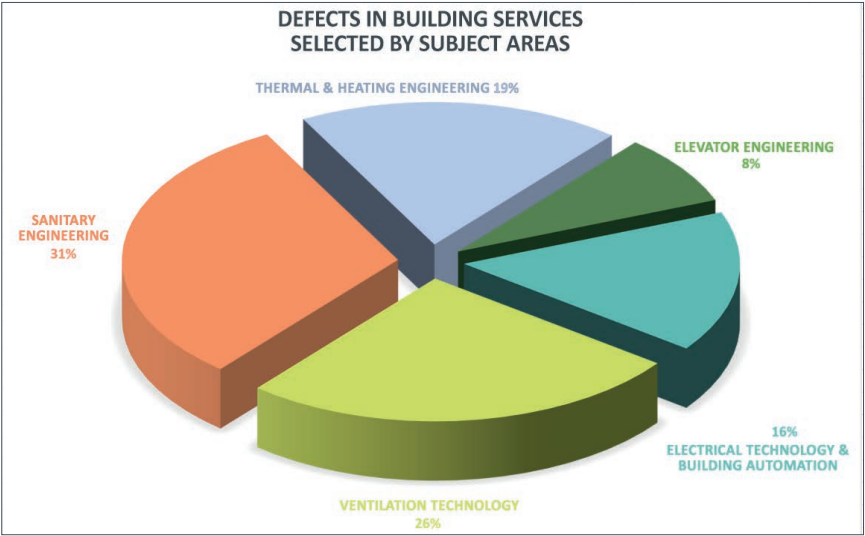
- Software development - by engineers for engineers
- Phone hotline - every day from 8 am to 10 pm
- Legal security thanks to storage of all data in a German data center
- Extensive search function and automatic text recognition (ORC)
- Legally compliant documentation
- Comprehensive project transparency depending on access authorization
- Web-based, browser and device independent, no program installation necessary
- For all devices via responsive interface
- Integrated mailing tool - external partners can be integrated without system access
- High-Level-Reporting
- Display of project and IFC structures, references and attributes
- Integrated issue management
- Include photos and voice messages as notes
- Unrestricted continuation of work possible with simultaneous upload of large amounts of data



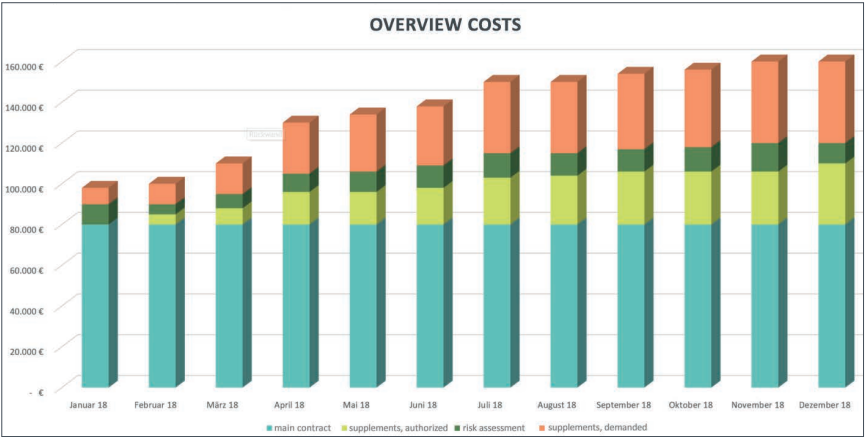
Reporting

Use the data available in PKS NETPlan® to create reports as required for various purposes:

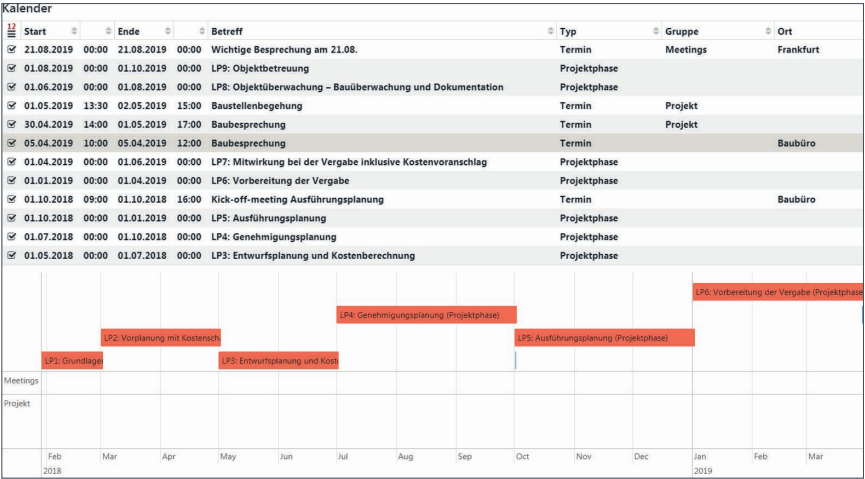
Quality



Costs



Schedules



Document management

Managing documents & information

PKS NETPlan® Document Management contains all the documents relating to your project. These can be uploaded or downloaded quickly and easily.

Customisable views and comprehensive search functions make this module reliable and intuitive to use. Thanks to OCR recognition, your search terms will also provide hits from scanned documents, drawings and even photos.

- Upload via drag & drop, multi-upload
- Sortable list view, folder-based view
- Ad-hoc workflows for automatic integration of other participants
- No restriction on the file size of documents being sent for further processing or information
- Any file types
- Versioning
- Full-text searches using OCR
- Comprehensive research function
- Link to other modules

Drawing management

PKS NETPlan® Drawing Management contains all the drawings for your project and controls the overall process.

The module automatically sends the drawings to all colleagues involved in the project for checking, release and printing. Even external experts can release drawings using the software, without prior registration on PKS NETPlan.

- Upload via drag & drop, multi-upload
- Sortable list view & folder-based view
- Automatic storage of drawing due to intelligent reading of the filename code
- Tasks & deadlines
- Drawing code management
- Automatic index management
- Connection to repro service
- Automatic drawing distribution list
- Project-specific workflows with processing deadlines & reminders
- Comprehensive research function
- Sending of drawings without additional transfer tool, irrespective of size
- Link to other modules



© Nomad_Soul / Fotolia.com



© Marteny / Fotolia.com

BIM model management

BIM has become an integral part of the construction industry. BIM is information. PKS NETPlan® provides you with a modern CDE for the associated processes, and with the connection of the BIM viewer Squirrel you complete your software portfolio to ensure comprehensive collaboration between all those involved in planning. Simplify not only the planning process of your construction projects, but also use all the advantages of our all-in-one solution.

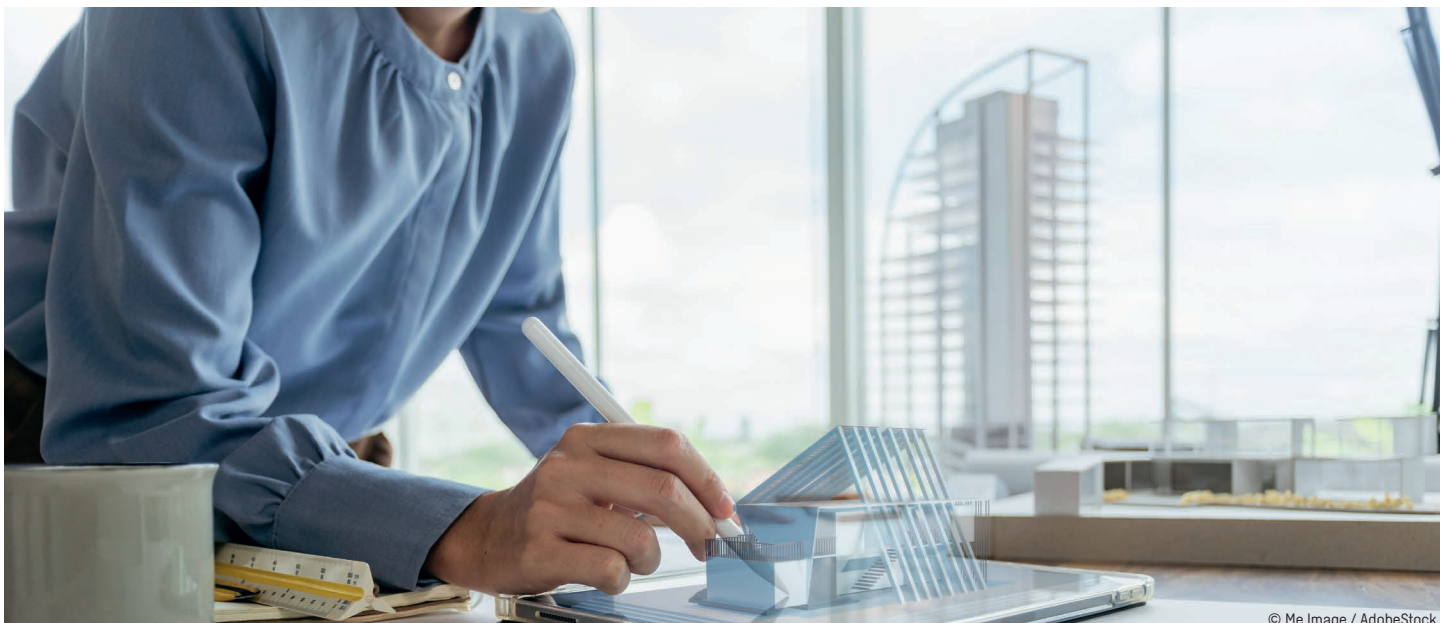
- Display of project and IFC structures, references and attributes
- Revision comparison (display of differences in geometry and attributes)
- Integrated status management according to DIN EN ISO 19650
- Fully browser-based 3D viewer (incl. standard functions such as cutting and measuring in the model)
- BCF-Issue Integration (create, assign, export, import and manage BCF-Issues)
- Collision check (incl. automatic summary)
- Immediate detection of planning changes

Minutes of meetings

Conduct meetings efficiently and document them automatically

Meetings are an essential part of project management, but it takes time to plan and document them. Save time and money by organising your meetings and creating the minutes directly in the PKS NETPlan® system.

- Creation of minutes directly in the system
- Automatically generated participant lists
- Creation of follow-up minutes with automatic transfer of open points
- Automatic generation of reports with the full history of selected items from the minutes
- Definition of tasks with assignment & tracking
- Automatic LOP (list of open points)
- Searches for terms in all minutes enables quick re-search
- Link to other modules



Construction diary

Quick and easy documentation on a tablet of all site activities

It is a key part of construction supervision to complete the construction diary. The aim is to have full and complete documentation of all the construction work. Once it has been documented, it must not be modifiable.

Good construction documentation creates a digital twin of all construction work. The digital construction site in PKS NETPlan® does exactly that. Using the PKS NETPlan® Construction Diary tool enables you to meet these requirements.

- Simple recording of all relevant data
- Quick recording of metadata using keyword lists
- Analysis & evaluation of all information about the building process
- Reliable documentation of construction activities
- Project-specific configuration of input screens & reports
- Parallel processing is possible by multiple construction supervisors
- Optimal customising in line with project requirements
- Incorporation of personal notes via smartphone, thanks to automatic text conversion
- Searches for terms in all daily construction reports enables quick construction diary research
- Link to other modules



Photo documentation

Quick locating of project photos

With PKS NETPlan® you can create photographic documentation of your project.

Thanks to multidimensional keywording in the form of selection lists and free texts, you can sort your photos in line with your project structure (e.g. buildings, construction phases or trades, obstacles, supplementary work) and then find them quickly and easily.

- Upload via drag & drop, multi-upload
- Clear list or tile view, file-based view
- Filing system same as defined project structure
- Comprehensive research functions
- Quick & easy indexing
- Automatic file size reduction
- Tagging of photos via GPS and displaying of the location in Google Maps
- Symbolic representation of defects on maps and drawings (location)
- Link to other modules



Defect management

Record and track defects on site

With PKS NETPlan® Defect Management you can fully document and track defects and deviations that are identified during construction work.

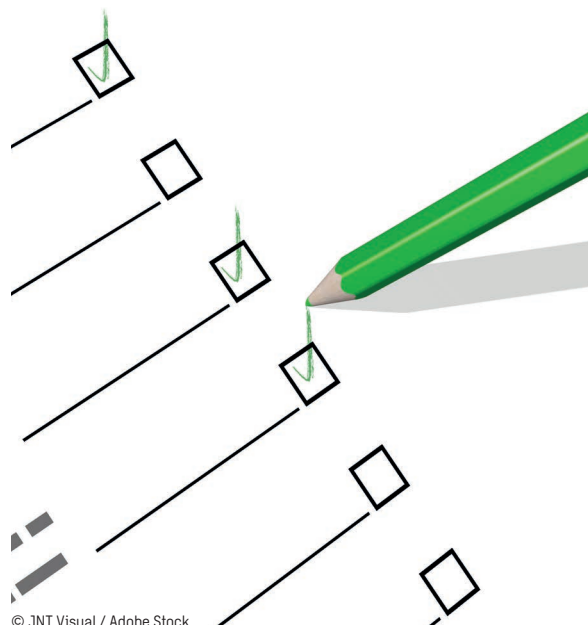
- Simple recording of all defects in construction and infrastructure projects
- Quick collection of metadata using keyword lists
- Analysis & evaluation of all information about the defect
- Deadline setting, reminder creation, defect tracking
- Project-specific configuration of input screens & reports
- Mobile recording on all end devices - including using the photo function
- Symbolic representation of defects on maps and drawings (location)
- Recording of defects also possible during temporary offline periods
- Display of the status of all defects and photos on a map or a drawing
- Link to other modules



Online forms

With PKS NETPlan® online forms, you can make your entries quickly, legally securely and paperlessly and document, distribute and sign condition findings of any kind.

- Configurable checklists
- Predefined selection lists
- Complete documentation
- Digital signature
- Legally compliant and clear
- Distribution to all participants at the push of a button
- Integration of photos
- Linking with other modules



© JNT Visual / Adobe Stock

Contract management

Identify cost risks in good time

One of the main objectives of project management is to stay within budget.

The advantage of PKS NETPlan® Contract Management is that you only have to manage one comprehensive and continuously updated follow-up list for the entire project. Analyses and reports show you the current status of the project at any point in time.

- Overview of contracts, supplementary processes & contract deviations
- Project controlling & budget reports
- Cost monitoring
- Risk management
- Graphic analyses
- Decision-making pool
- Earned value analysis
- Cost trend analysis





0.05
Kantoor
25.13 m²

0.04
Receptie
53.86 m²

0.02
Centrale hal
62.91 m²

1.22
Tochtsluis
9.47 m²
© Rutmer / Adobe Stock

0.23
Wach
19.05 m²





Our customers





**Sweco plans and designs
the sustainable communities
and cities of the future.**

We offer our clients the combination of global expertise and local understanding of their business and context. Our ambition is to be our clients' most relevant partner. To achieve that, we aim to solve any challenge, no matter scale or location.



www.sweco-gmbh.de

www.pks-netplan.de

